



Pupil Premium



the support available for families, with children, who are in receipt of the Pupil Premium bursary



The way we do things at **Wadebridge School**
Key guidance for students and parents

Pupil Premium spending plan located on the school website under: our school, Pupil Premium



Pupil Premium at Wadebridge School



The PP Team

A team of advocates dedicated to supporting PP pupils at Wadebridge School. Contact will be made by a member of this team throughout the school year to support you and your child.



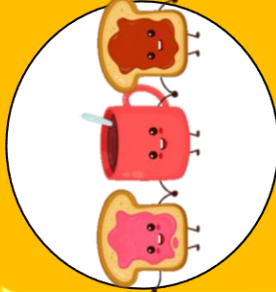
Pupil Premium Bursary

All PP students have access a bursary of £70 to be spent during each academic year. This contributes towards the cost of resources, uniform, equipment, etc.



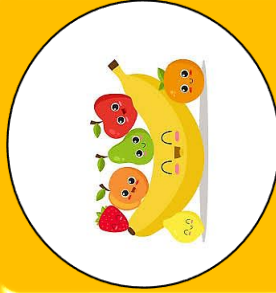
Educational Visit Funding

We have allocated funding to make sure all students are able to attend curriculum based educational visits. This funding is separate to the Bursary funding



Breakfast Club

All students have the opportunity to have breakfast before school from 8:15 am - 8:35 am with a variety of food on offer, in the junior canteen. This is available to all students and funded by MCKS.



Breaktime Snacks

Through MCKS funding we are able to offer all students free fruit, and cereal bars during the week.



mckscharity.co.uk



The Pupil Premium Team

Headteacher- **Mat Winzor**
Assistant Headteacher- **Jayne Williams**

HLTA Team

Natalie Ross
PP HLTA
nross@wadebridge.cornwall.sch.uk

Ann Coles
English HLTA
acoles@wadebridge.cornwall.sch.uk

Beth Hill
ERP HLTA
bhill@wadebridge.cornwall.sch.uk

Faye Stansbury
Maths HLTA
fstansbury@wadebridge.cornwall.sch.uk

Sheryl Perchard
Geography HLTA
sperchard@wadebridge.cornwall.sch.uk

Toni Worden
Science HLTA
tworden@wadebridge.cornwall.sch.uk

Phoenix Wright
History HLTA
pwright@wadebridge.cornwall.sch.uk

Contact will be made by a member of the team at various points throughout the school year to help support with events, such as making parents' evening appointments.



Student Bursaries



How students can access funding to support academic success



PP students are allocated a £70 bursary at the start of every academic year. This is to cover the cost of most essential items needed for school e.g. uniform. We will provide **one** of each uniform item, e.g. one school jumper, one tie, one PE top etc. per student. School equipment – e.g. maths packs, stationery set, revision packs, revision books etc. This £70 is for the academic year and is available for each child, we are not able to share the funding between siblings. If there are any funds remaining by the end of the Summer term the funding will not be ‘rolled over’.



This funding is separate to the funding of school meals.



We also have educational visit funding to support students accessing the curriculum and allowing them to go on curriculum based school visits.

Alongside the £70 allocation of funding for each PP student, we have a discretionary fund available if there are additional essential items needed.

For the discretionary funding, attendance and attitude to learning will be considered as part of the request.





Student Bursaries



Uniform Support



With the cost of living increase, we have put in place “Uniform Sets” to support you with providing new school uniform for your child, using your bursary. Unless your child is new to the school you will be offered this option at the end of the Summer term ready for the forthcoming Autumn term. We also have a small selection of pre-loved uniform available upon request.

Option 1: £40

Wadebridge School Jumper

Tie

PE top & PE shorts

Option 2: £50

Wadebridge School Jumper

Tie

PE top & PE shorts

PE Hoody

Option 3:

Customise – you may already have the above options and require some items that have been outgrown. Please let us know the uniform items that you are in need of and we can order them for you using the bursary.

Please note we can only order **one** of each item per school year e.g. **one** school jumper, **one** PE top. We will then let you know how much of the bursary you have left to go towards revision guides, equipment etc.



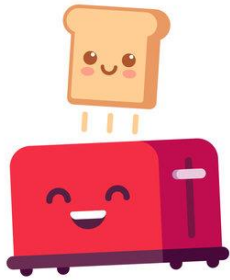
Breakfast Club

A Positive start to the day!



Breakfast Club

Students are able to arrive to school, get some breakfast for free and check that they are ready for the school day.



Where and When?

Daily 8.15- 8.35 in Junior Canteen



I come to breakfast club because...

- Good selection of food available.
- I get an early bus.
- I get to see my friends before school.
- I don't have time for breakfast at home.

Breakfast club has made a difference to be because...

- I can focus on my day because I'm not hungry.
- It's free.
- I've made new friends in different year groups.



MCKS Charitable Foundation UK, partners with schools across the country to provide cereal, breakfast bars, fruit and pastries. This allows us to offer a free breakfast club to all students at Wadebridge School.

LRC

We are able to arrange uniform and equipment loans or orders in the LRC. Staff are on hand to provide support if needed, this may be giving advice immediately or arranging a meeting for later in the day.





Pupil Premium Strategy

The implementation of our strategy

